

# 45

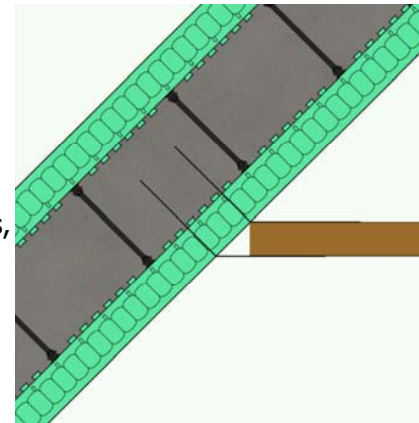
## Degree Hanger Insert Plate

### > New Product Announcement

Due to popular demand, NUDURA® has introduced another accessory product to the world of insulated concrete forms. The 45° Hanger Insert Plate has a number of functions and can make a simple solution to a difficult problem. Installation is similar to the previously released Multi Purpose Hanger plate. Once you have your chalk lines set to where the hanger plates are required, simply make two cuts in the NUDURA® panel with a keyhole saw to match the height of the plate. NUDURA shows three scenarios where the 45° Hanger Insert Plate can be useful. In each of these situations, you will cut into the foam in a different manner. These scenarios are as follows:

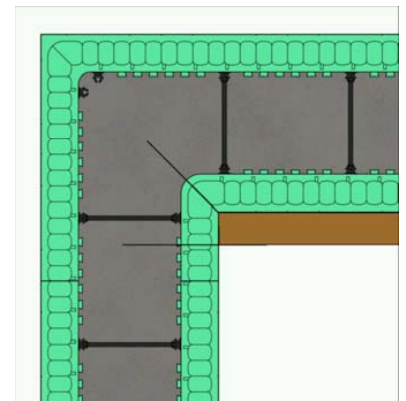
#### **Basic Installation**

- 1) Ensure you have joist layout prior to alignment system.
- 2) Prior to pouring the form, mark and cut your joist locations and insert the 45° plates.
- 3) Pour form and when concrete has set, insert the joist member with the bearing bracket between the plates.
- 4) From one side, fasten the beam through both insert plates using three 4" (100mm) #14 screws. To ensure screws grab both plates, use a wedge block between wall and plate.



#### **Inside Corner Installation**

- 1) Mark and cut and insert 45° plate into the corner of the form.
- 2) Insert a normal flat plate just outside the corner allowing for the width of the joist member.
- 3) Pour the form and when concrete has set, insert the joist member with the bearing bracket between the plates.
- 4) From one side, fasten the beam through both insert plates using three 4" (100mm) #14 screws.



### **Outside Corner Installation**

- 1) Mark, cut and insert a 45 degree plate into the corner of the form.
- 2) Insert a normal flat plate just outside the corner, allowing for the width of the joist member.
- 3) Pour the form and when concrete has set, insert the joist member with the bearing bracket between the plates.
- 4) From one side, fasten the beam through both insert plates using three 4" (100mm) #14 screws

